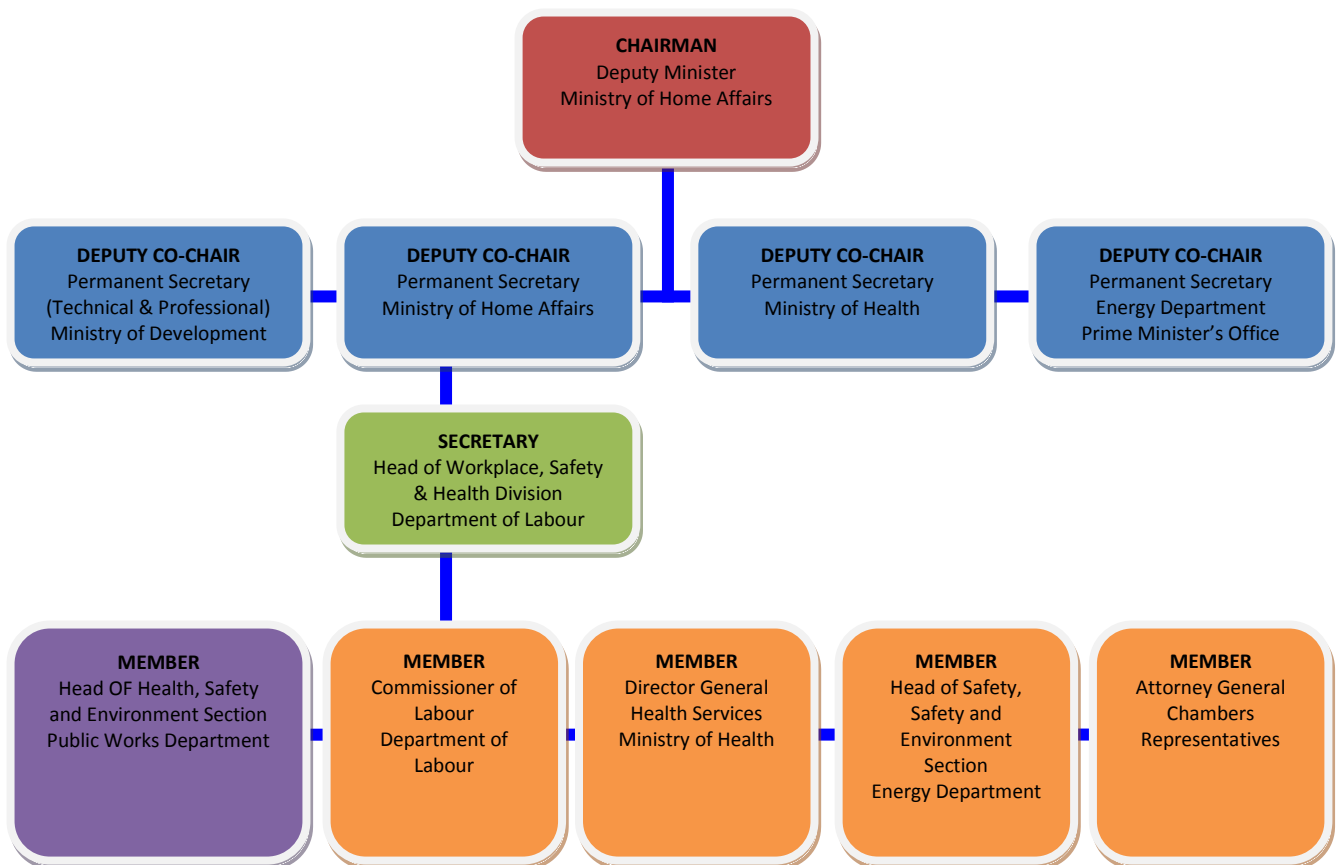


## WSH STEERING COMMITTEE

There are four main departments mandated with the roles of OSH that makes up a Workplace Safety and Health Task Force. These departments work closely together in consultation with regards to activities and any decision making involving OSH issues for the country. The departments mentioned below are the Working Group responsible in engaging employers and employees to regulate the Order. The following departments are :

- Department of Labour, Ministry of Home Affairs
- Environmental Health Services, Ministry of Health
- Public Works Department, Ministry of Development
- Energy Department, Prime Minister's Office

The main function of the steering committee is to develop a mutual understanding within various government agencies and to coordinate a National approach in handling OSH activities.



### Public Works Department

The Health, Safety and Environment Section (HSE) of the Public Works Department monitors and evaluate the safety, health and environment standards of construction sites of government projects in the country. Currently, the HSE Section is occupied by fourteen (14) personnel, six (06) are assigned as HSE Inspectors by Labour Department, four (04) Technical Staff and four (04) Administration Staff are available to keep updated information on daily activities, receive letters and to communicate directly to clients and other individuals for matters arising from HSE. In addition, the department has also published the "Ministry of Development : Health Safety and Environment Manual" as a guideline for contractors to reach expected national standards.

The initiatives taken to raise Occupational Safety, Health and Environment awareness by the HSE Section of the Public Works Department are as follows :

- To promote high levels of safety, health and environment at work.
- Priority in Occupational Safety, Health and Environment in National Agendas.
- Building and maintaining a national preventive safety, health and environment culture.
- Share and recognise training, consultation and exchange of information on good practices and prevention in promoting safety, health and environment.
- Act as one of the government regulatory bodies monitoring the performance on safety and health environment in the construction industry.
- Enforcement on mandatory safety, health and environment requirements in the construction industry through safety audits and performance.
- Determine the right strategies on HSE through planning, design and construction phase of the projects to prevent occurrences of accidents and fatalities.